

Growing Up Mahaffie



Mahaffie Stagecoach Stop and Farm Historic Site

In 1857, the Mahaffie family moved from Indiana to the promising new settlement of Olathe, Kansas. It was an age of opportunity on the frontier.

The stone farmhouse built by James B. and Lucinda Mahaffie in 1865 is one of the few stagecoach stops left on the Santa Fe Trail, and the only one preserved as a public historic site. Along with the farmhouse, the stone ice house - also built in 1865 - and the original timber-frame barn are all listed on the on the National and Kansas Registers of Historic Places. Mahaffie is also a certified site of the Santa Fe National Historic Trail by the National Park Service.

The Barlow, Sanderson & Co. stagecoach line contracted with the Mahaffie family to provide one of the stops needed for their coaches operating in Kansas, and carrying passengers and the U.S. Mail from Missouri all the way to Santa Fe. From 1865 to 1869, hungry passengers took their meals in the basement of the stone farmhouse, built to serve as a kitchen and dining hall. Other travelers used the home as well, and wagon trains bound for Oregon and points west camped nearby.

The Mahaffie home and adjoining property was purchased by the City of Olathe in 1979 to insure its preservation and to operate as a historic site. The site is administered by the Parks and Recreation Department of the City of Olathe.

Tours of the home, living history activities, stagecoach rides, and special events vary with the season. The site gift shop features books and merchandise for children and adults. The Mahaffie Stagecoach Stop and Farm Foundation supports fundraising efforts for the preservation of the site and public programming.

Special Thanks!

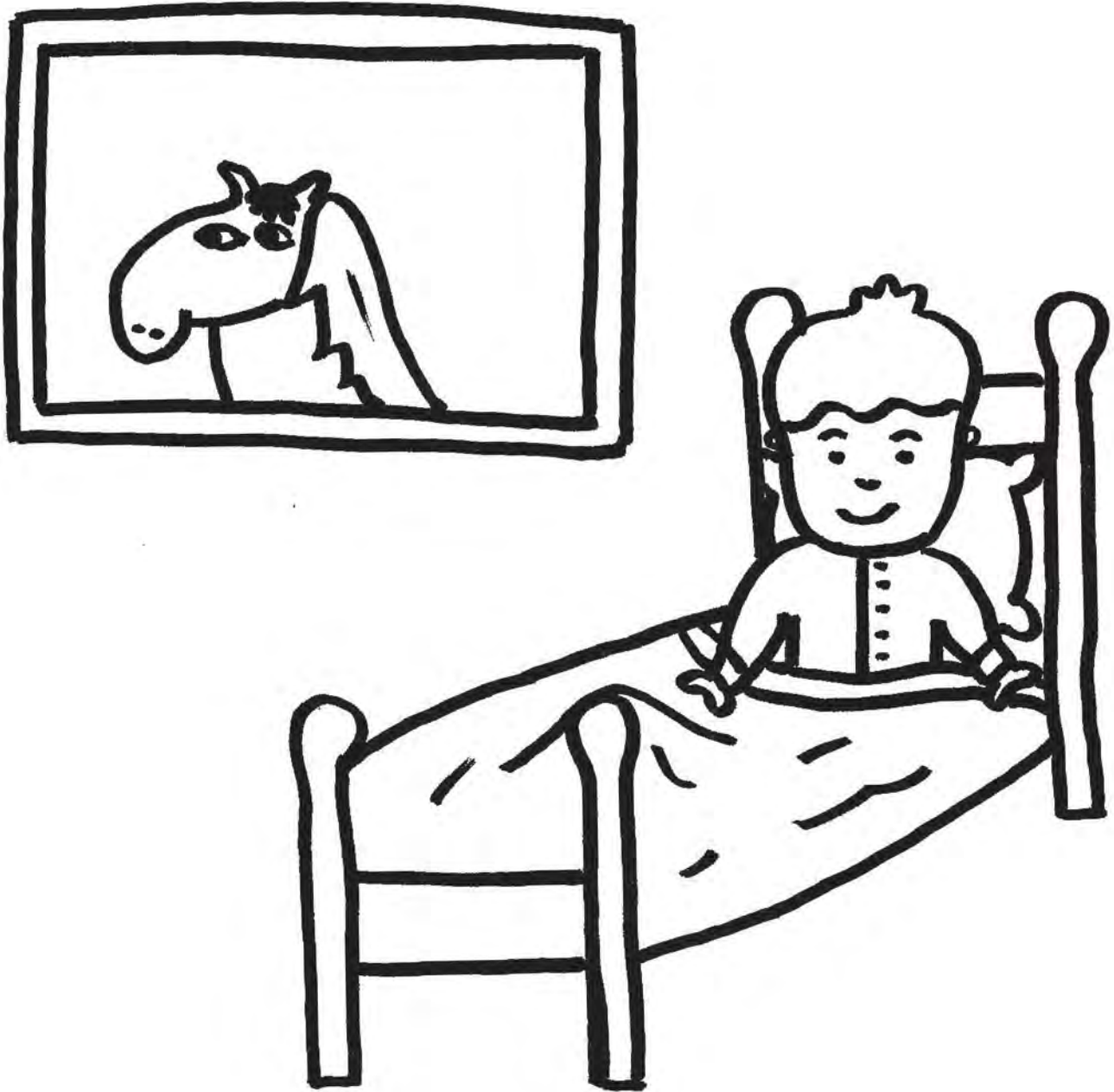
We want to thank the members of our staff who have made this *Growing Up Mahaffie* coloring book possible.

Illustrations by Brenna Hobbs ~

The illustrations were created by Brenna Hobbs, a senior at Olathe South High School. Brenna has been with us since fall, 2015, and helps with research projects and collections, and also living history interpretations.

Written by Brittany Thurman ~

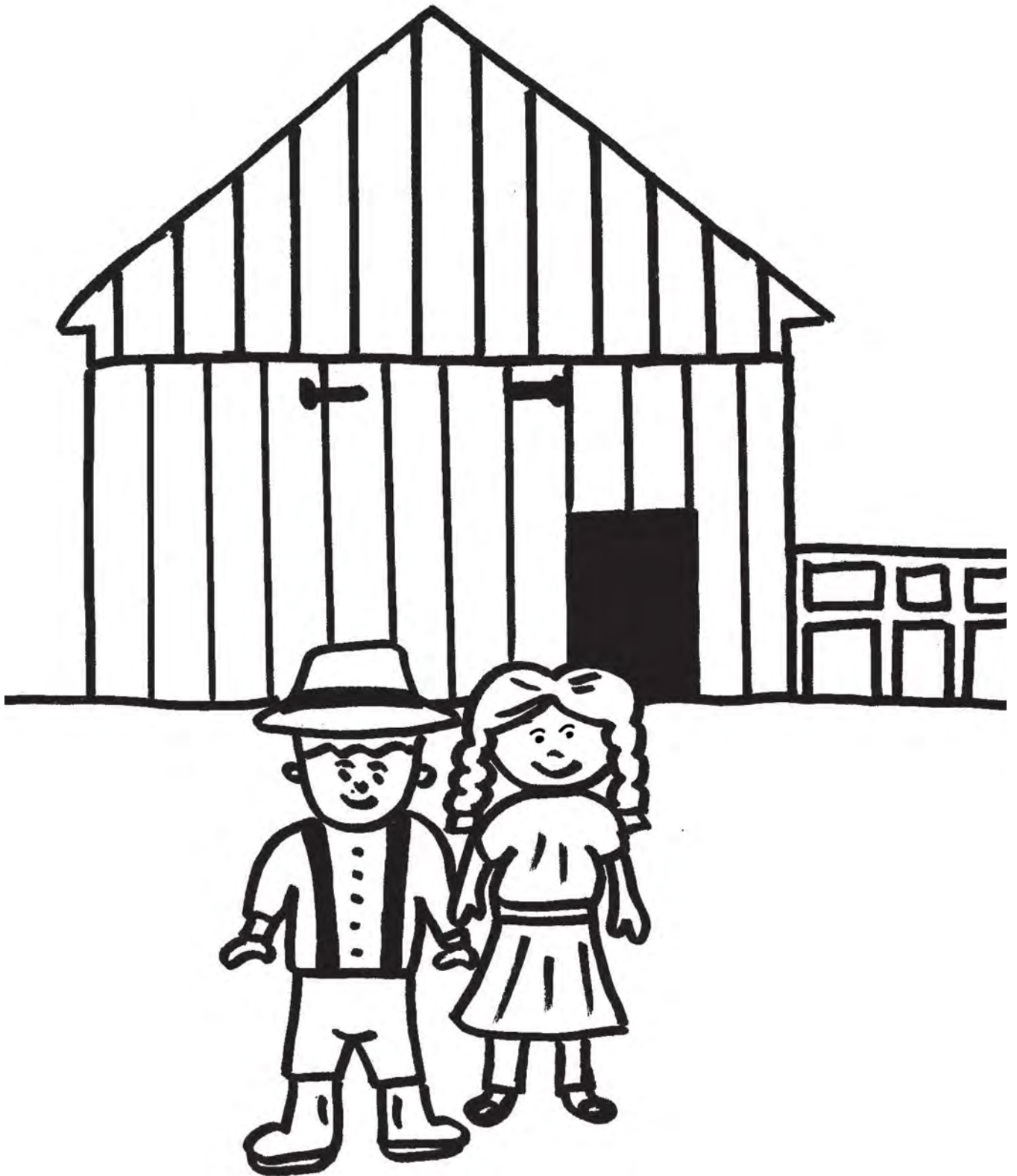
Brittany worked with Mahaffie Stagecoach Stop and Farm in 2013 and 2014. She received her Masters in Museum Studies from the University of Kansas and now works for the Nantucket Historical Association as the 1800 House Program Manager.



**It's time to wake up and greet the day.
It's time for Frank to feed the horses hay.**



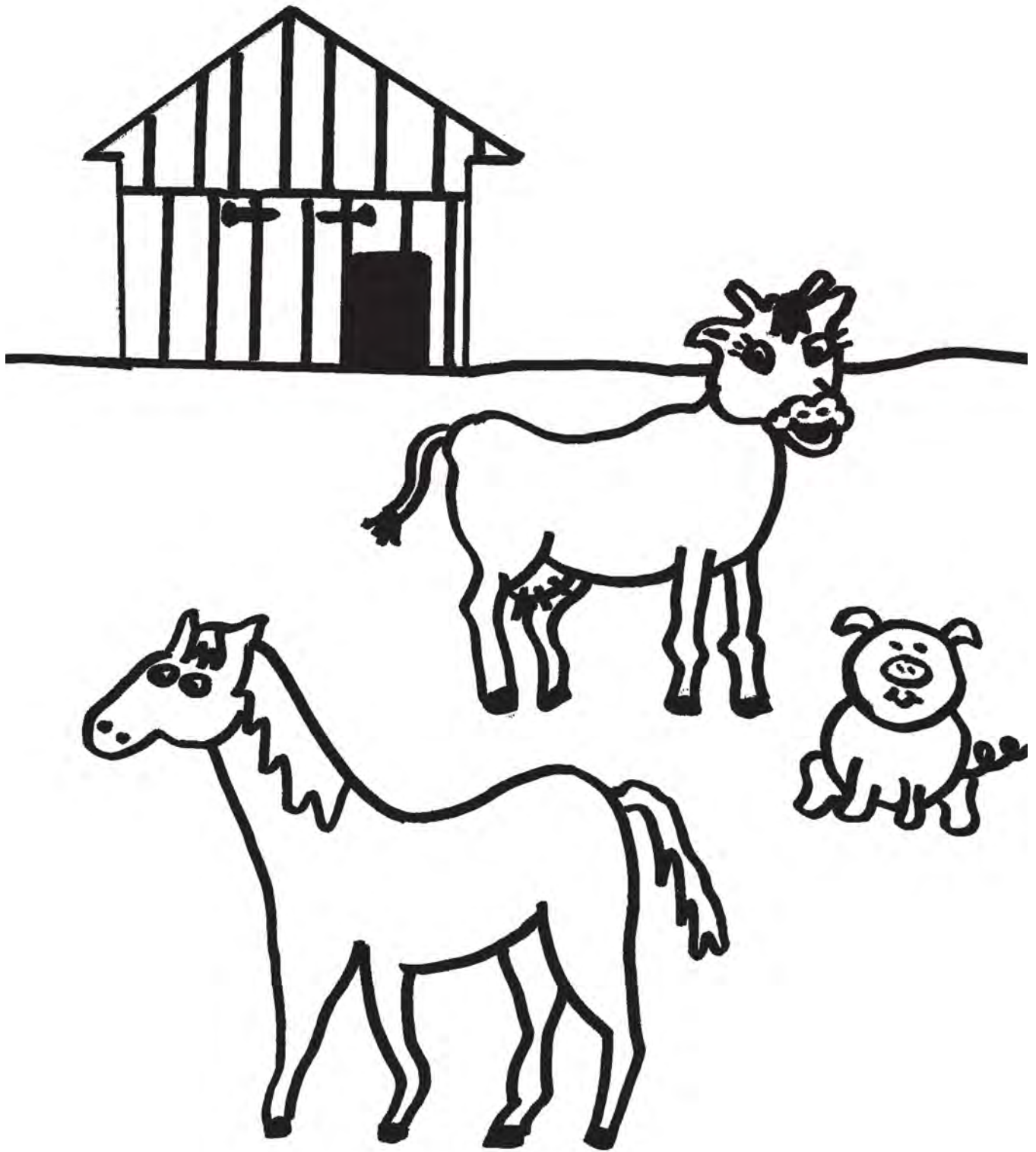
It's time for Ella to get out of bed.
It's time to put on her favorite dress in red.



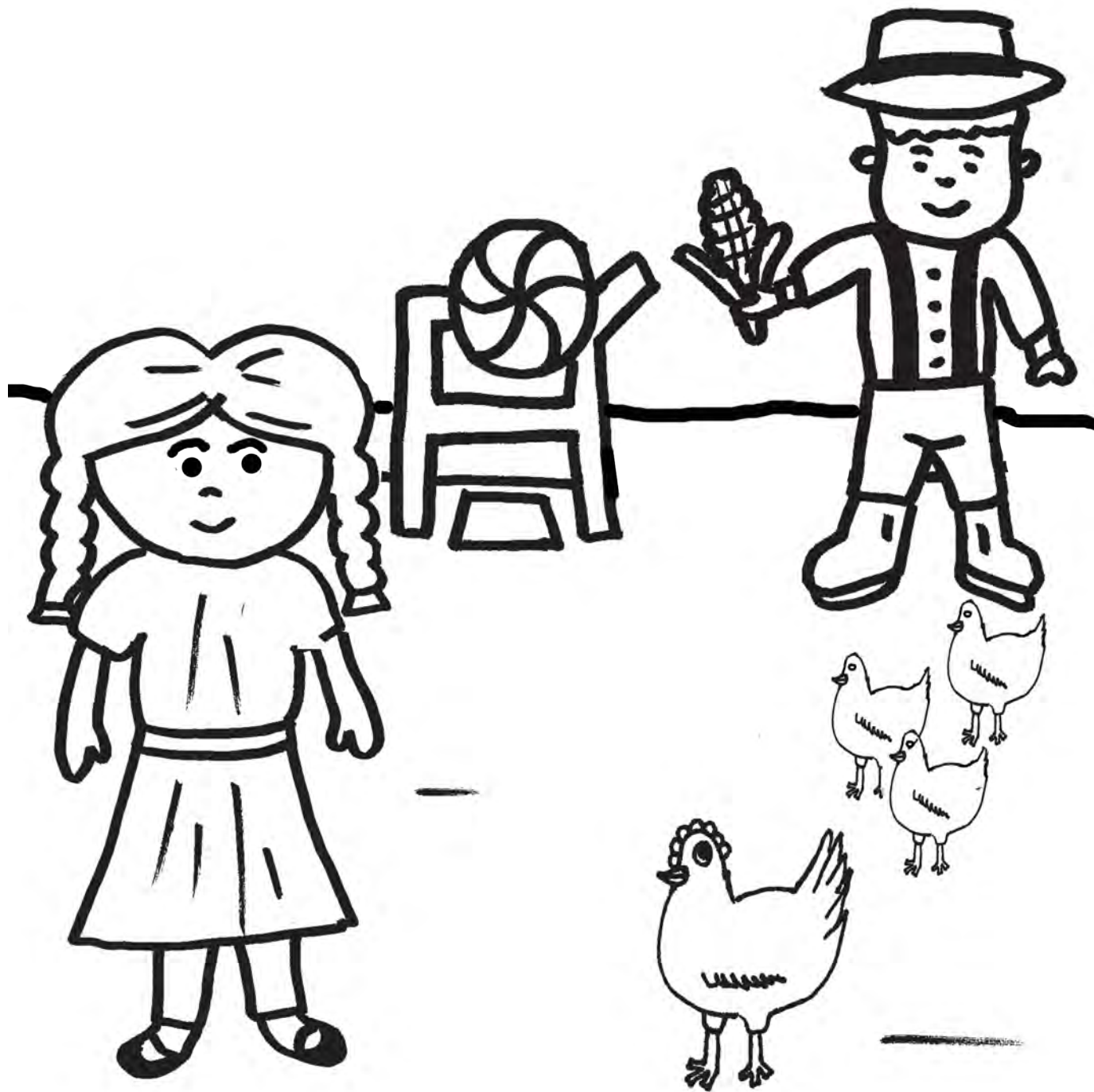
Frank's only eight, but there's lots of work to do.
Ella's only four, but she has some farm chores, too.



The sun is bright so Frank needs his hat.
Ella puts on a bonnet and so does her cat!



There are horses, cows, and pigs to feed.
The fields need to be planted with corn seed.



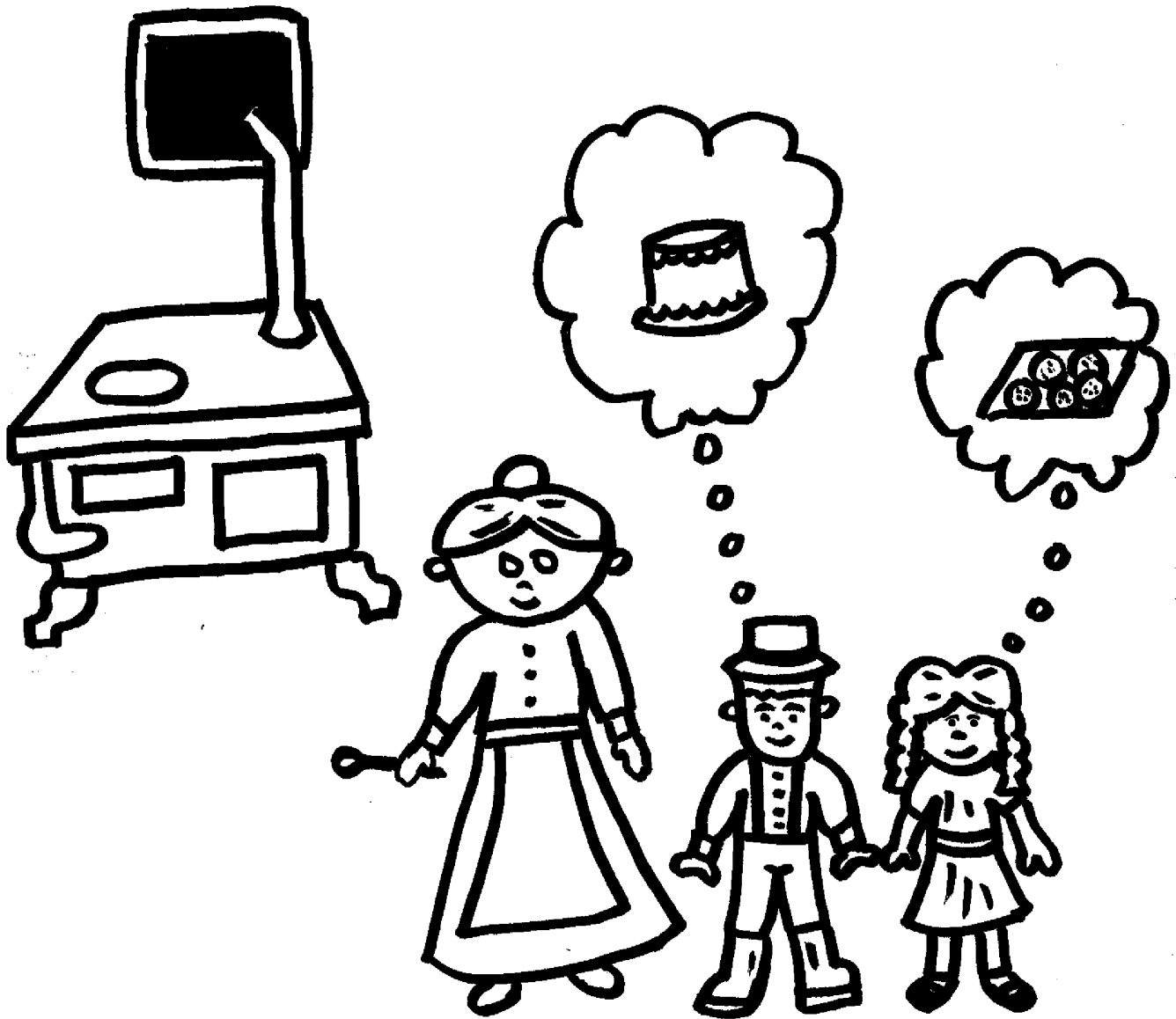
Frank grinds the corn, and Ella feeds the hens. They watch the baby chicks that have become best friends.



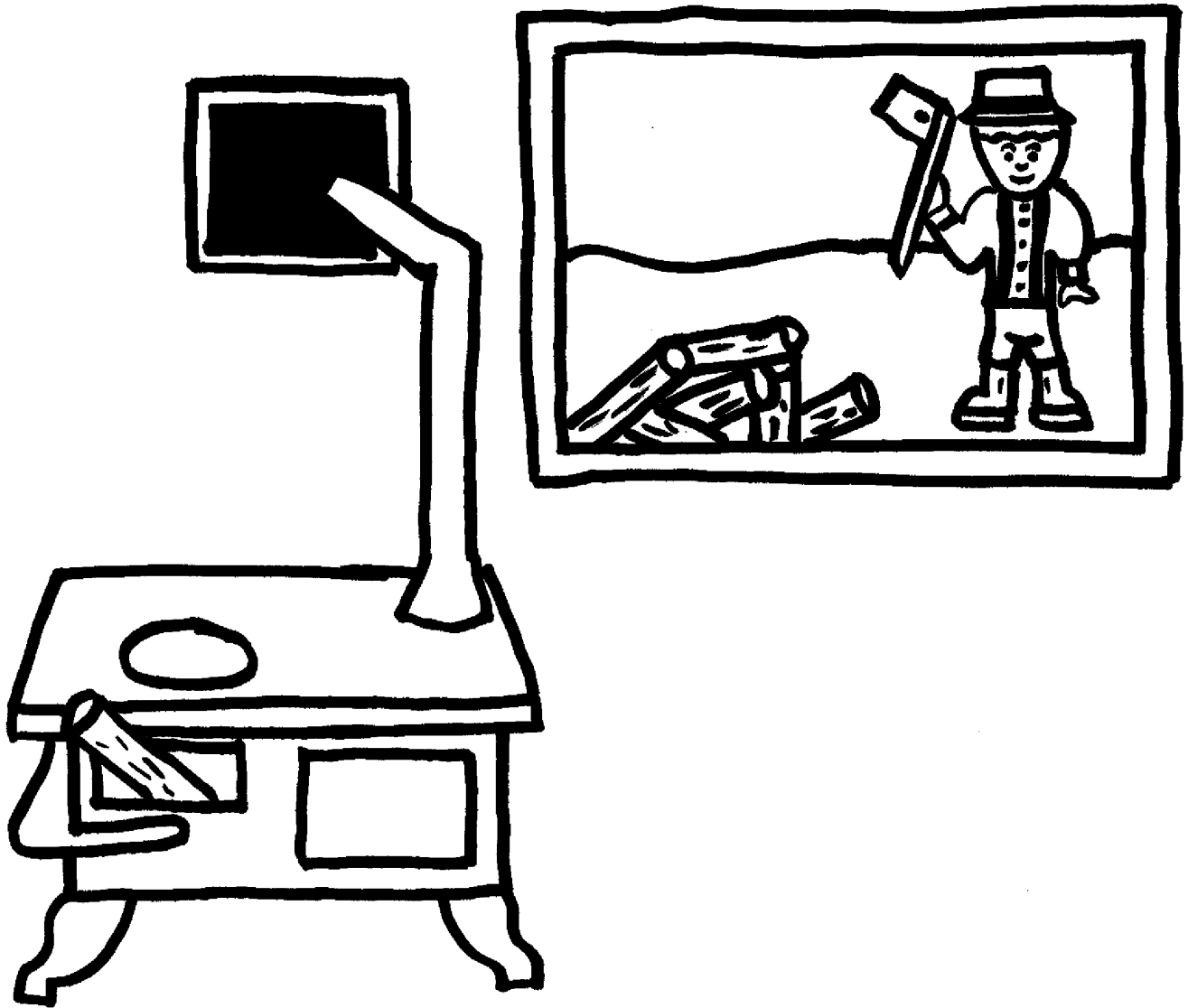
Frank carries water to fill the tub.
Ella helps her mom with the clothes to scrub.



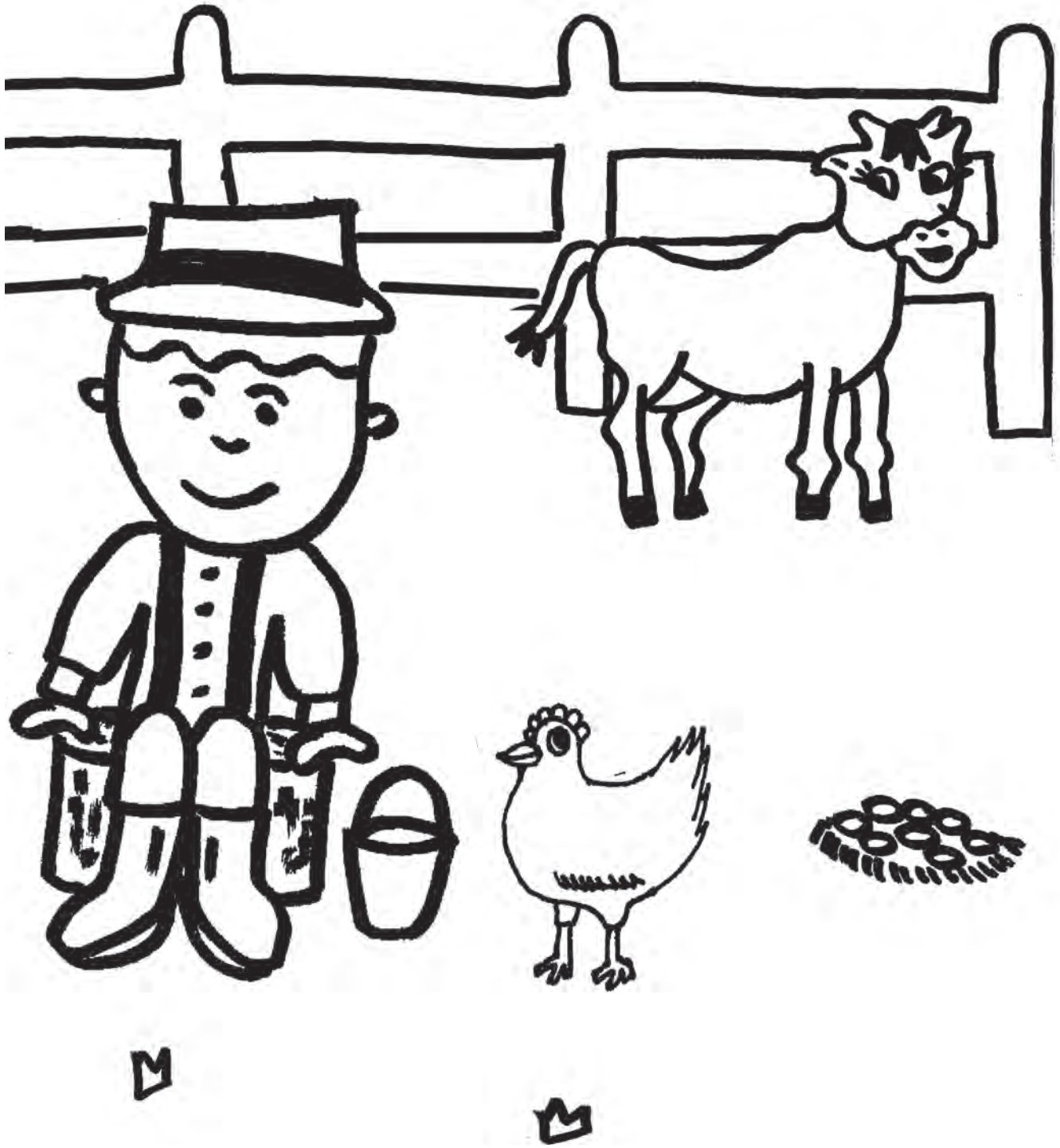
Hang the wash on the line to dry.
Farm clothes sure get dirty—
I don't wonder why!



Ma needs help in the kitchen to bake.
Ella wants cookies, but Frank wants a cake.



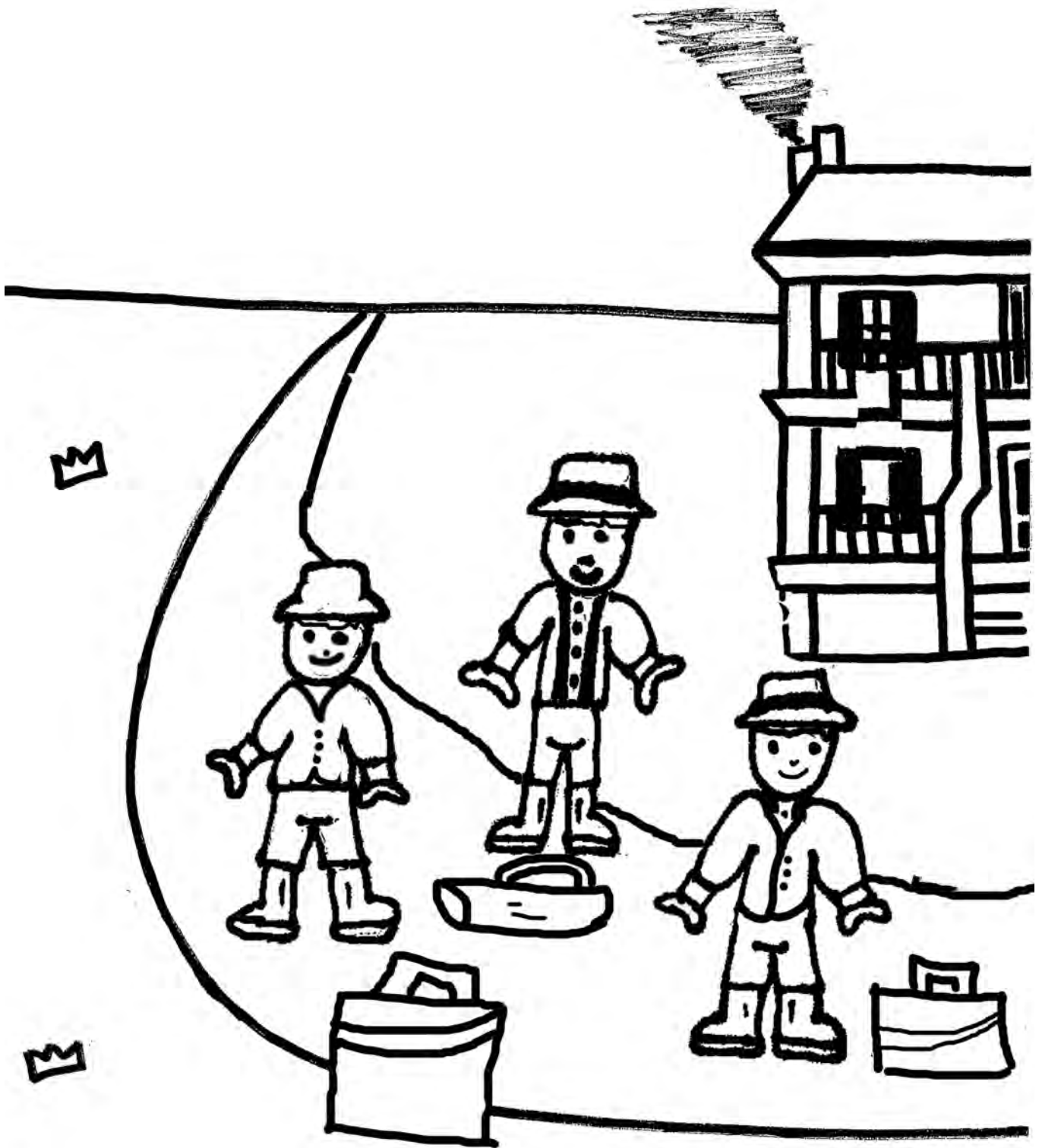
To heat up the stove, they'll need to build a fire.
Frank chops wood, and the flames get higher.



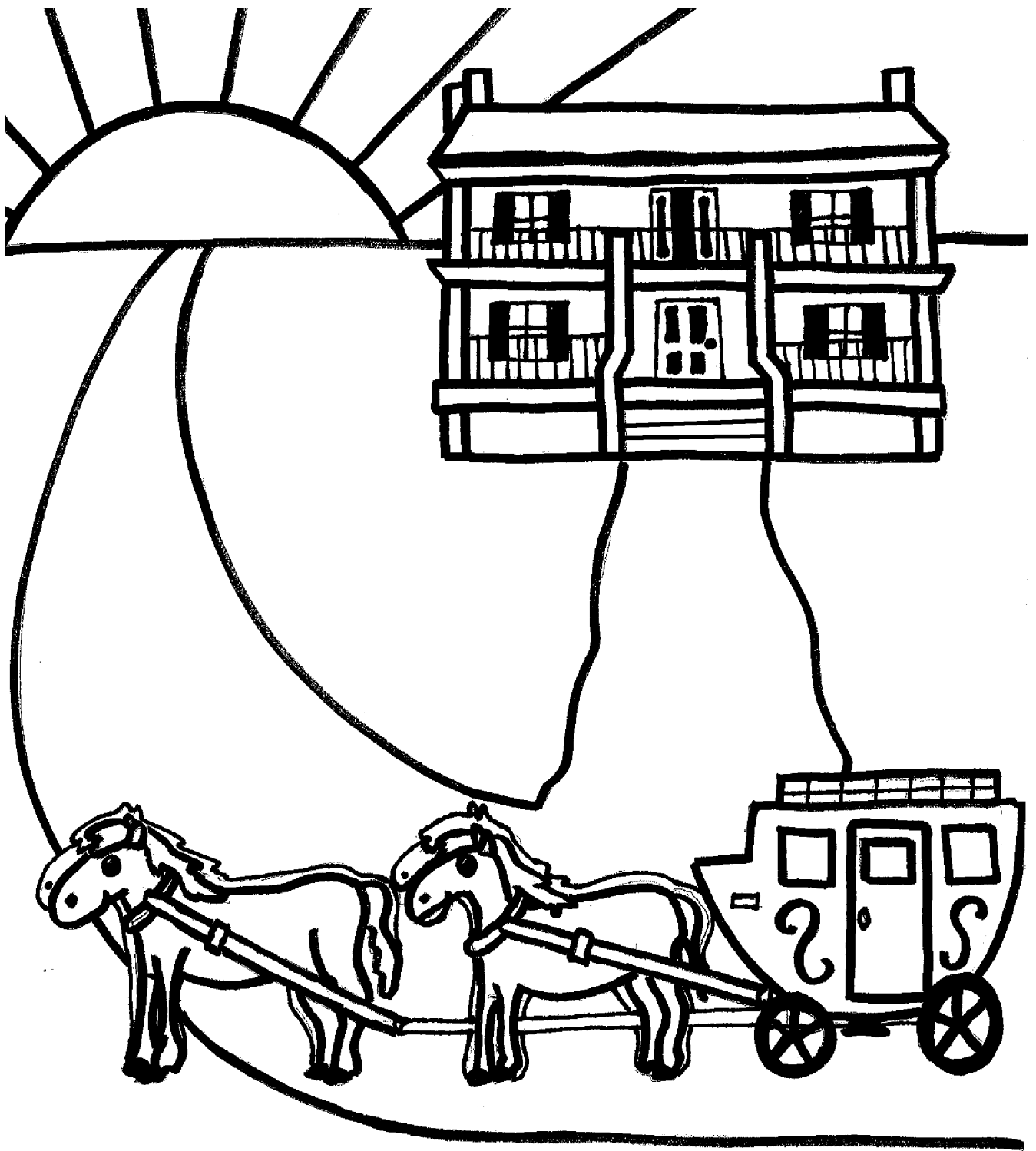
Better gather those eggs and milk the cows.
They'll make as many cookies as Ma allows.



While the cookies bake, it'll take some time.
There are games to play and trees to climb.



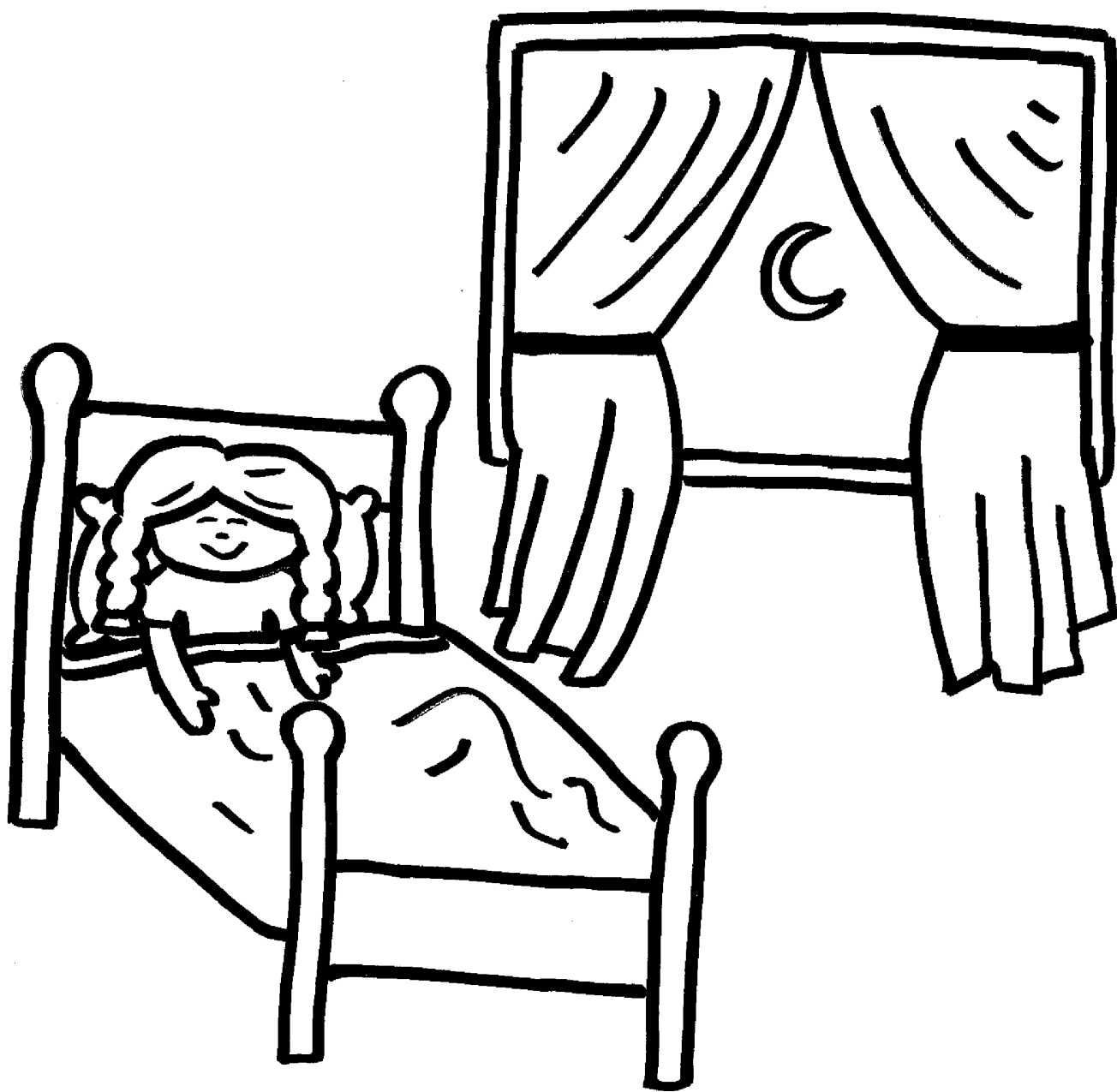
Better stop playing because the stagecoach is here.
The travelers are hungry, and dinner is near.



Everyone's been fed, so it's time for them to go.
The horses are hitched, so yippee yi yo.



It's dark outside. The sun has fled.
It's time to go inside and go to bed.



They'll dream sweet dreams until the morning.
Life on a farm is anything but boring.

Mahaffie Stagecoach Stop and Farm Historical Timeline



1857
James B. and Lucinda Mahaffie move their family from Indiana to Olathe, Kansas.

According to family stories, the Mahaffie farm becomes a stagecoach stop: a place to change horses and for passengers to take meals.

1869
Railroad arrives in Olathe, diminishing the importance of stagecoaches for travel.



The Mahaffies sell their farm and the stone house.



1903
Death of family patriarch James Beatty Mahaffie on Oct. 12. He was 89.

1977
Mahaffie site is added to the National Register of Historic Places.



1979
Construction of the Mahaffie Heritage Center allows museum to be redeveloped as a living history farm.



2015
The Mahaffie stone farmhouse marks its 150th anniversary.

- 1857
- 1858
- 1864
- 1865
- 1869
- 1882
- 1886
- 1903
- 1907
- 1957
- 1977
- 1979
- 2008
- 2014
- 2015

1858
Mahaffies purchase land along the Santa Fe Trail, relocate city house to new property. Family tradition says the Mahaffies begin serving travelers immediately.

1865
Stone farmhouse is completed, including basement kitchen and dining room to better accommodate travelers.



1882
James, 64, and Lucinda, 55, purchase a house in town and retire from farming.



1903
Death of family matriarch Lucinda Henderson Mahaffie on May 25. She was 76.

1957
Olathe celebrates its 100th anniversary; Ella Mahaffie, 83, youngest daughter and long-time educator, is profiled in city paper about her life memories. She died the following year.

1979
City of Olathe acquires the Mahaffie farm, including the original stone house, ice house and barn; goes on to open site to public as a house museum.

2014
Mahaffie Agricultural Heritage Barn opens.





Mahaffie Stagecoach Stop & Farm Historic Site
1200 Kansas City Road
Olathe, KS 66061 • 913-971-5111
mahaffie.org